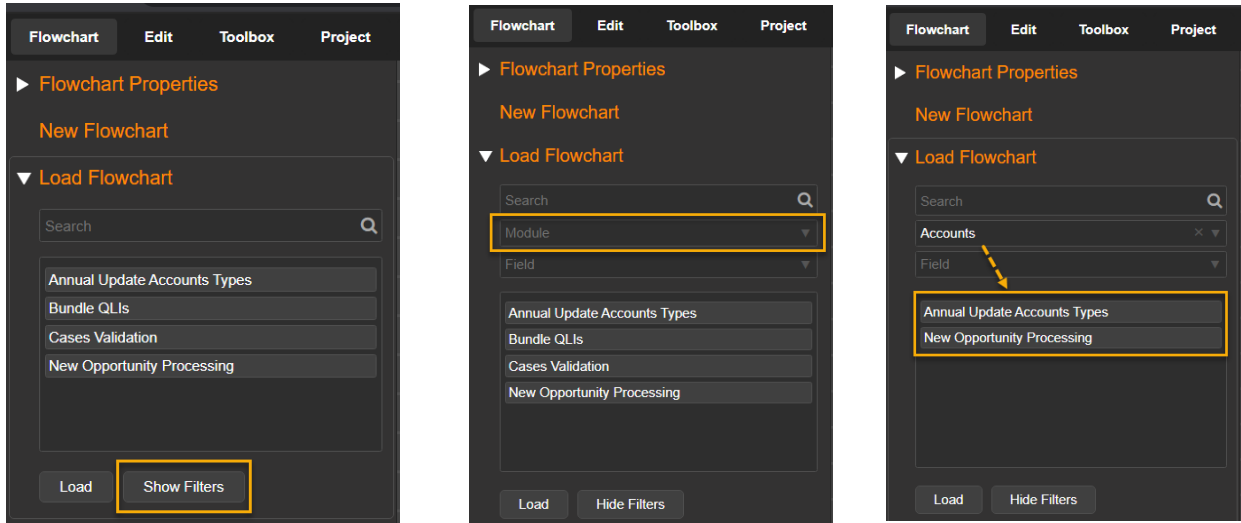
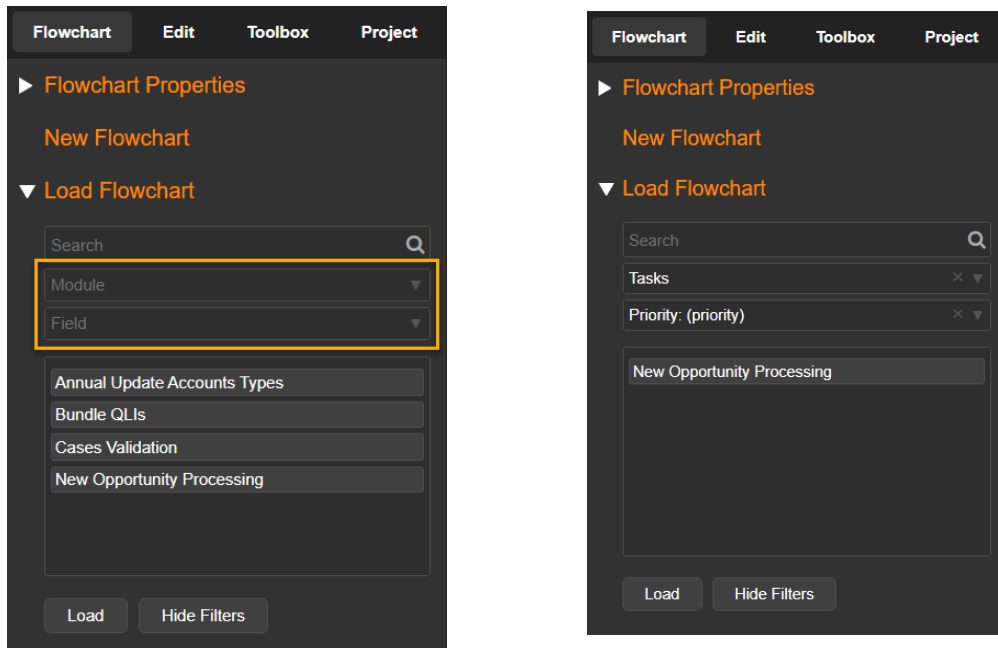


Filtering flowcharts

With a new **Flowchart Filtering** feature, you can search for flowcharts by field and module names used in them. This filtering feature is available right on **Load Flowchart** dialog box. The following pictures demonstrate the process of searching for flowcharts related to Accounts module:

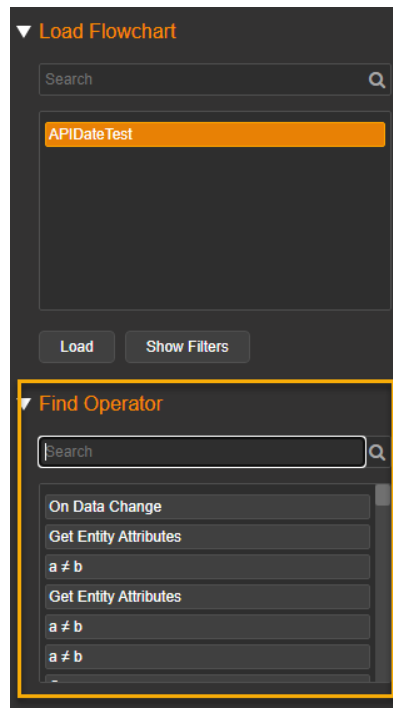


You can narrow down the list to find only those flowcharts that mention a specific field of the module. The following pictures demonstrate the process of searching for flowcharts related to Priority field of Tasks module:

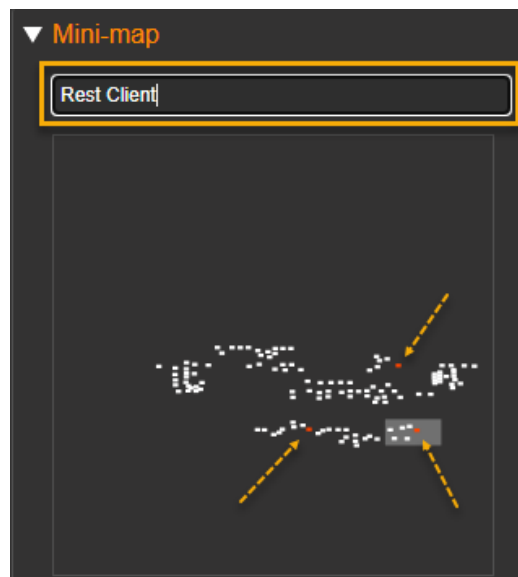


Locating operators in flowcharts

Find Operator feature allows easily locating specific operators on large flowcharts. **Find Operator** dialog box displays all operators from the currently loaded (or created) flowchart. You can narrow down the list of operators by typing any part of the operator name in **Search** field. When you click any operator in the list, it is displayed in the center of the drawing area.



The old way of locating operators with the help of the mini-map is still available. You can type the name of the operator in **Highlight** field of **Mini-map** dialog box and it will highlight the correspondent operators. Click on any point of the mini-map in order to display it in the center of the drawing area.

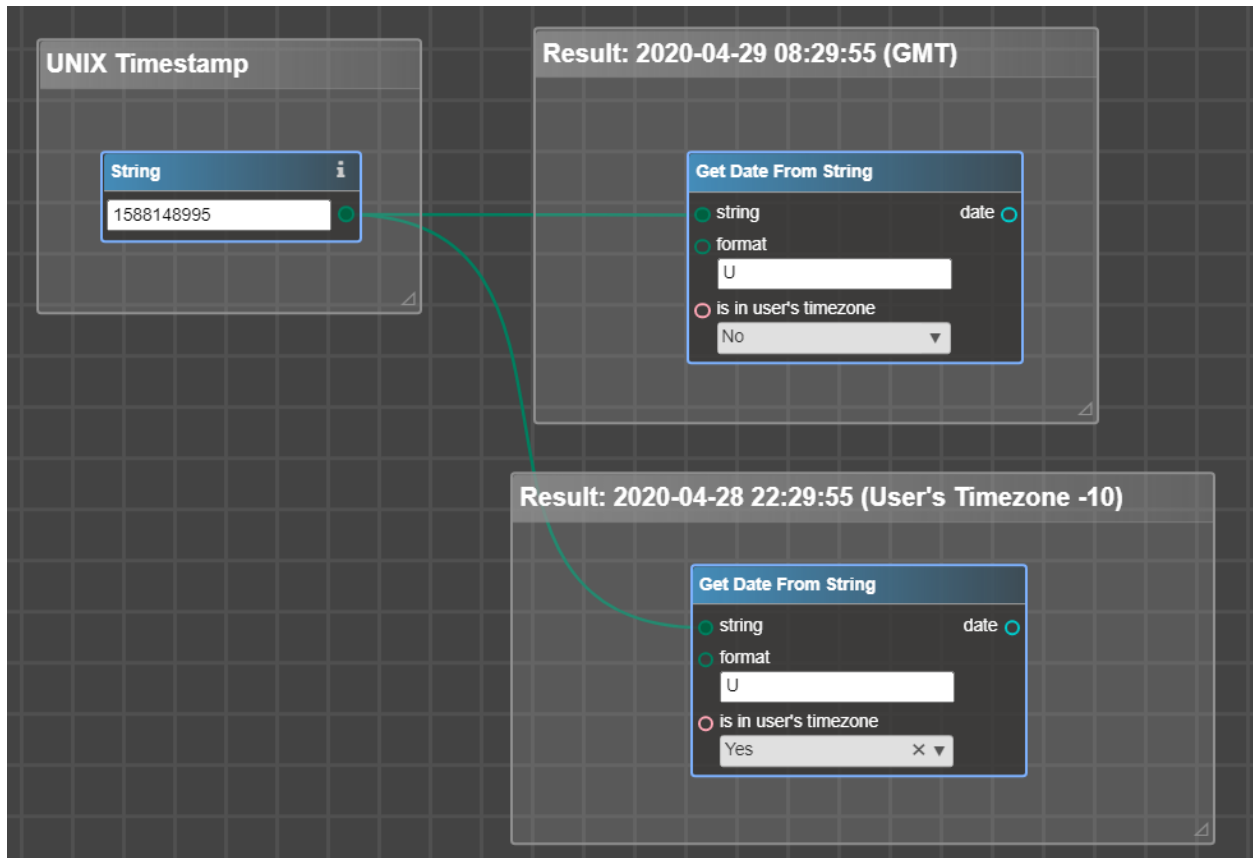


New operators for working with dates

A number of new operators added to enhance the way you can work with dates in your flowcharts.

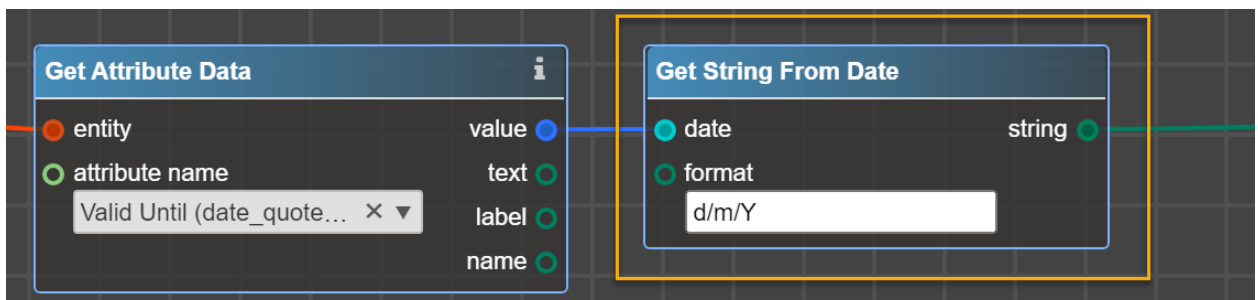
Get Date from String operator is intended for converting strings to dates. Feed **String** and **Format** ports of the operator with the string representing some date and its format respectively. You can find the allowed date formats [here](#). If you want a resulting date to be converted according to the current Sugar user's time zone settings, then select Yes in **Is In User's Timezone** port.

The following picture shows the example of converting a string representing UNIX timestamp to a date:



In order to convert a date back to a string, you can use **Get String From Date** operator. **Format** port defines the resulting string format. Allowed formats are the same that are used for **Get Date from String** operator.

The following picture shows the example of converting a date to a string using d/m/Y format:



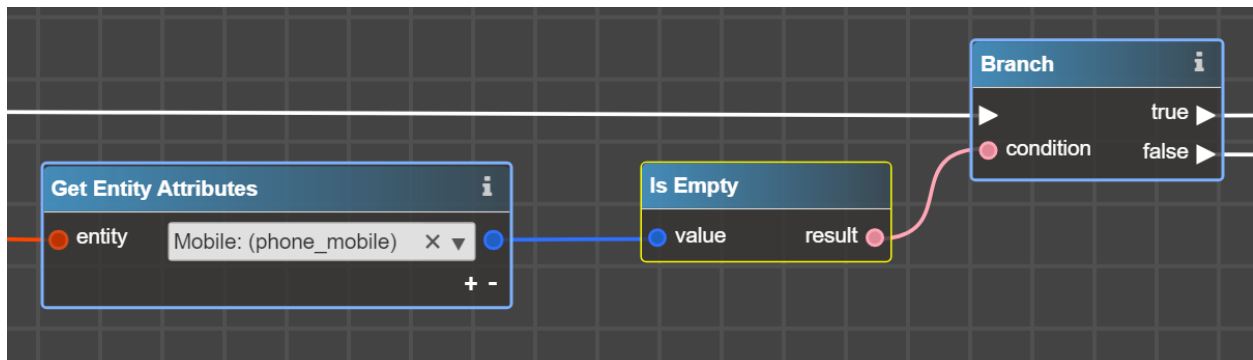
The following are the examples of some commonly used date formats:

- Y-m-d H:i:s (2020-12-17 10:24:59)
- U - Seconds since the Unix Epoch (e.g. 1608222665)
- c - ISO 8601 date (e.g. 2004-02-12T15:19:21+00:00)

Important notice: If you use Date Type fields to compose API requests (using **Rest Client** operator), then you'll need to use **Get String From Date** operator there in order to format dates properly.

Checking values for emptiness

Is Empty operator is useful when you need to check if any particular value is empty. The result of this operator will be True if a value-under-test is either NULL or empty string. The following picture shows the example of using **Is Empty** operator.



New ready-made metadata

A bunch of new ready-made metadata packages added to Logic Builder. Now you can create new projects based on the following presets:

- Sugar 10.0.2 Pro
- Sugar 10.0.3 Ent
- Sugar Sell & Serve 10.2